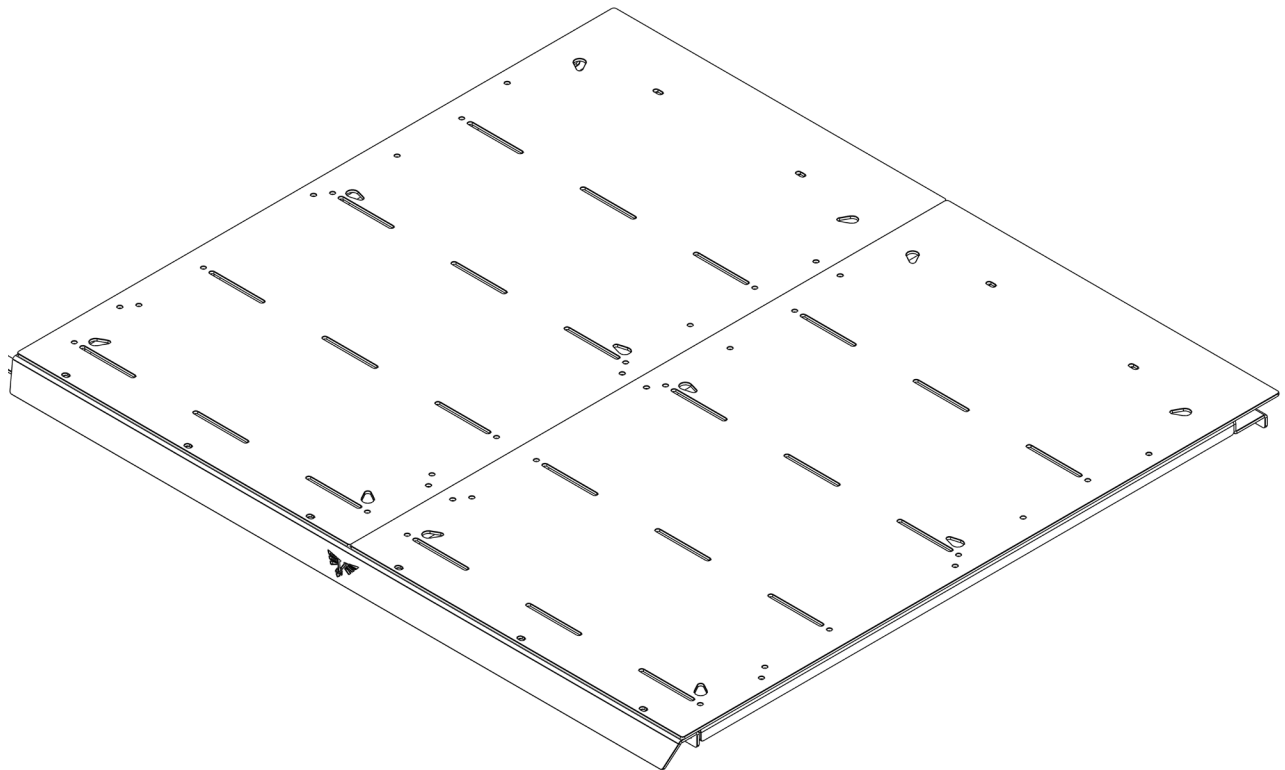




VICTORY 4X4

# 5TH GEN 4RUNNER OFF-GRID DRAWER SYSTEM FLOOR

## INSTALL INSTRUCTIONS

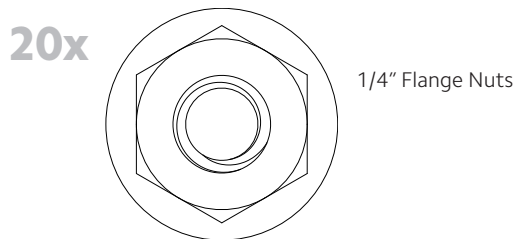
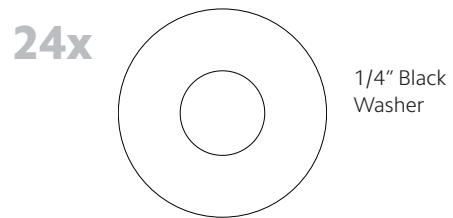
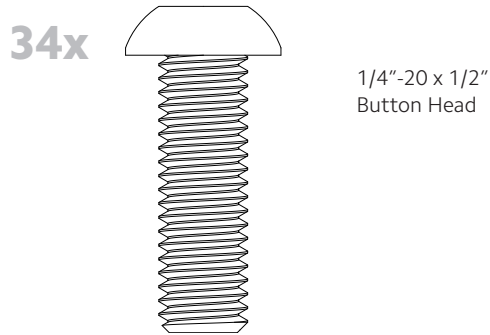


**Please read the mounting instructions below carefully before attempting to install.**

**Be sure to check out the install video on the product page, if available.**

Thank you for purchasing from Victory 4x4! Checkout our website, [victory4x4.com](http://victory4x4.com) for other great off-road products. Be sure to rate and review our product online. If you have any questions or are missing parts, please don't hesitate to call us at 269-459-8447!

# INCLUDED HARDWARE

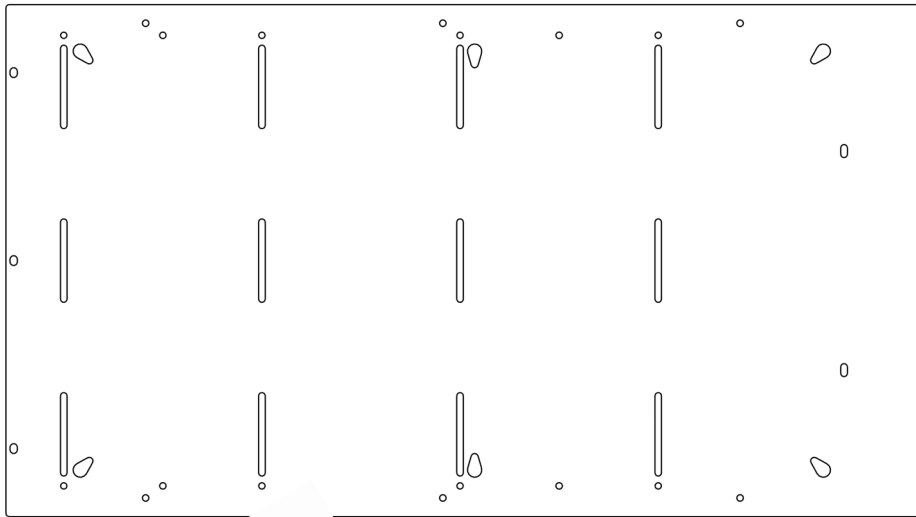


For installation on vehicles with OEM cargo slide, as mentioned on the product page you will need a couple of OEM Toyota items to complete the installation. We have linked the items below with quantities needed. It is also possible to sell/trade your cargo slide privately, and use the OEM carpet from the other vehicle for use with this installation.

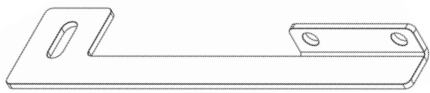
- 1x Rear Carpet w/ insulation
  - <https://autoparts.toyota.com/products/product/carpet-assy-rr-floor-5857035160c1>
- 2x Factory Tie Down Mounts
  - <https://autoparts.toyota.com/products/product/bracket-ctr-floor-b-5824960020#popup-1>

# INCLUDED PARTS

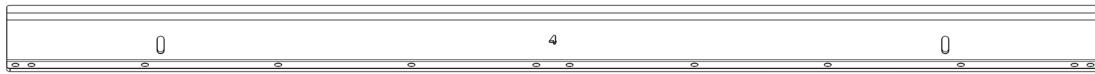
2x



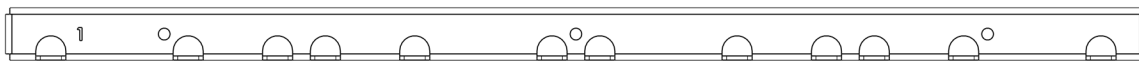
1L/1R



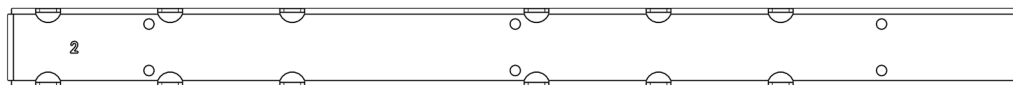
1x



2x



1x



2x

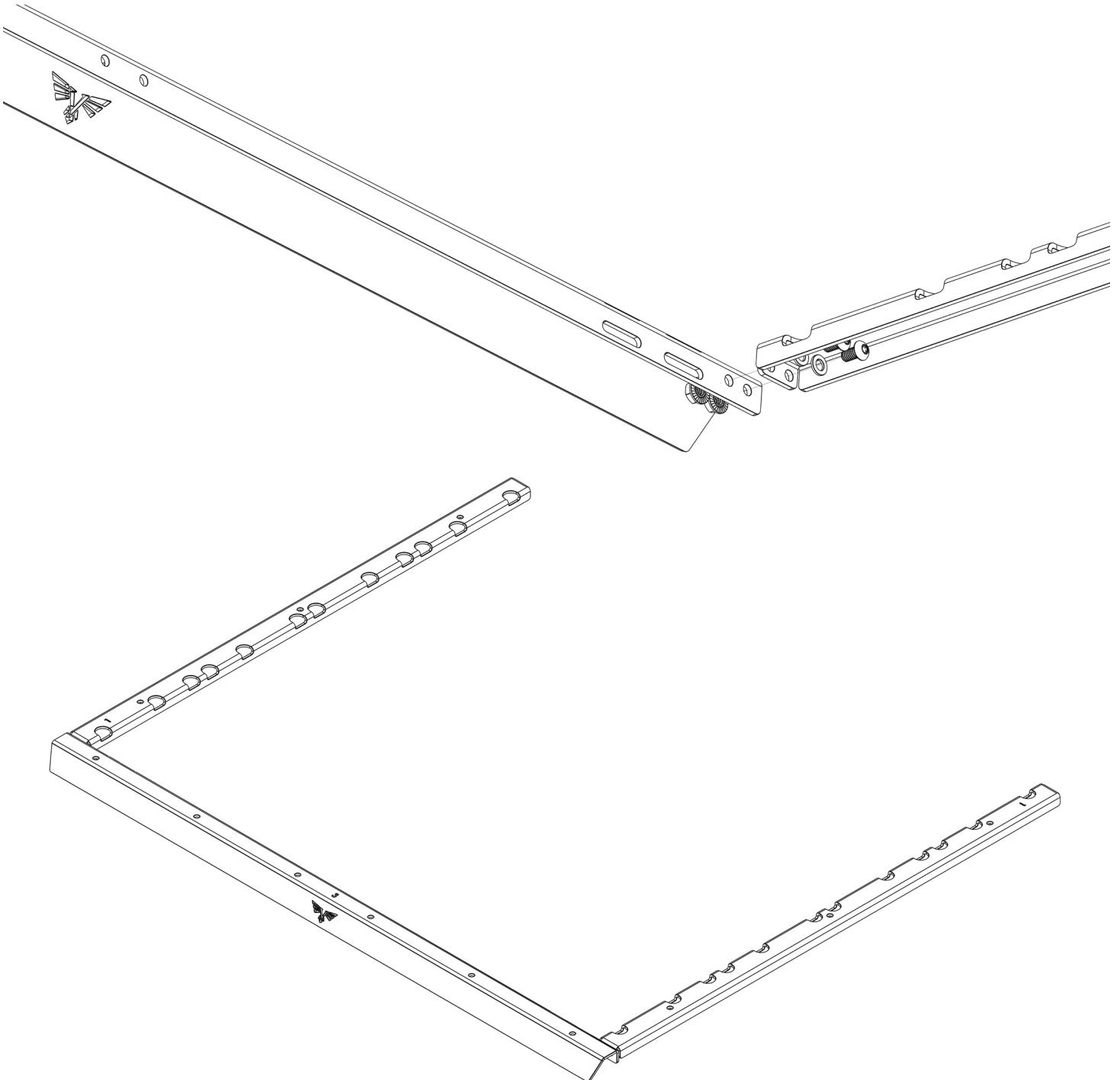


1x



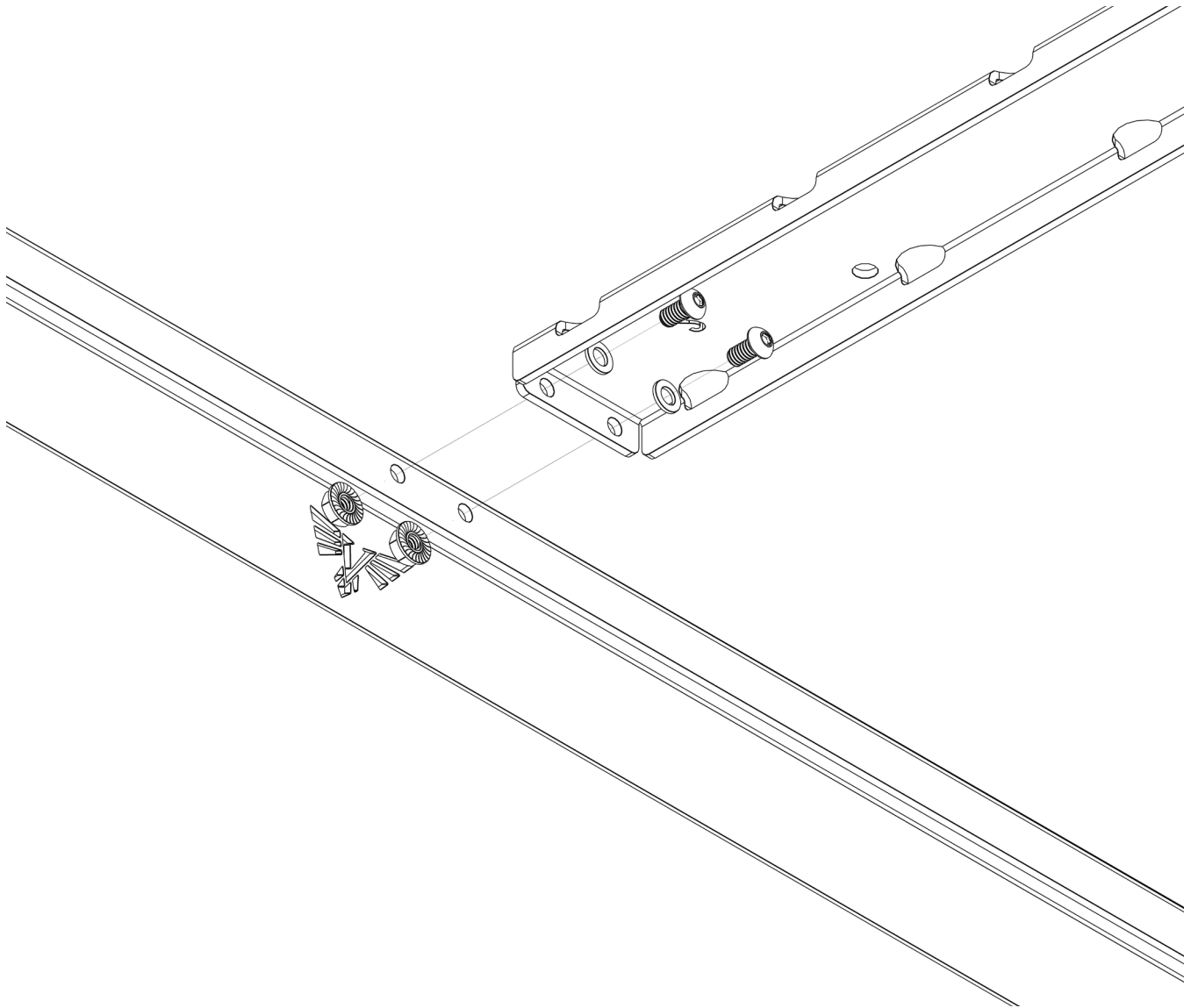
# INSTALLATION

1. Start by assembling the (2) provided side brackets using the 1/4" bolts, washers and flange nuts. Be sure to assemble in the correct orientation as shown below, with the cut outs facing in toward the middle.

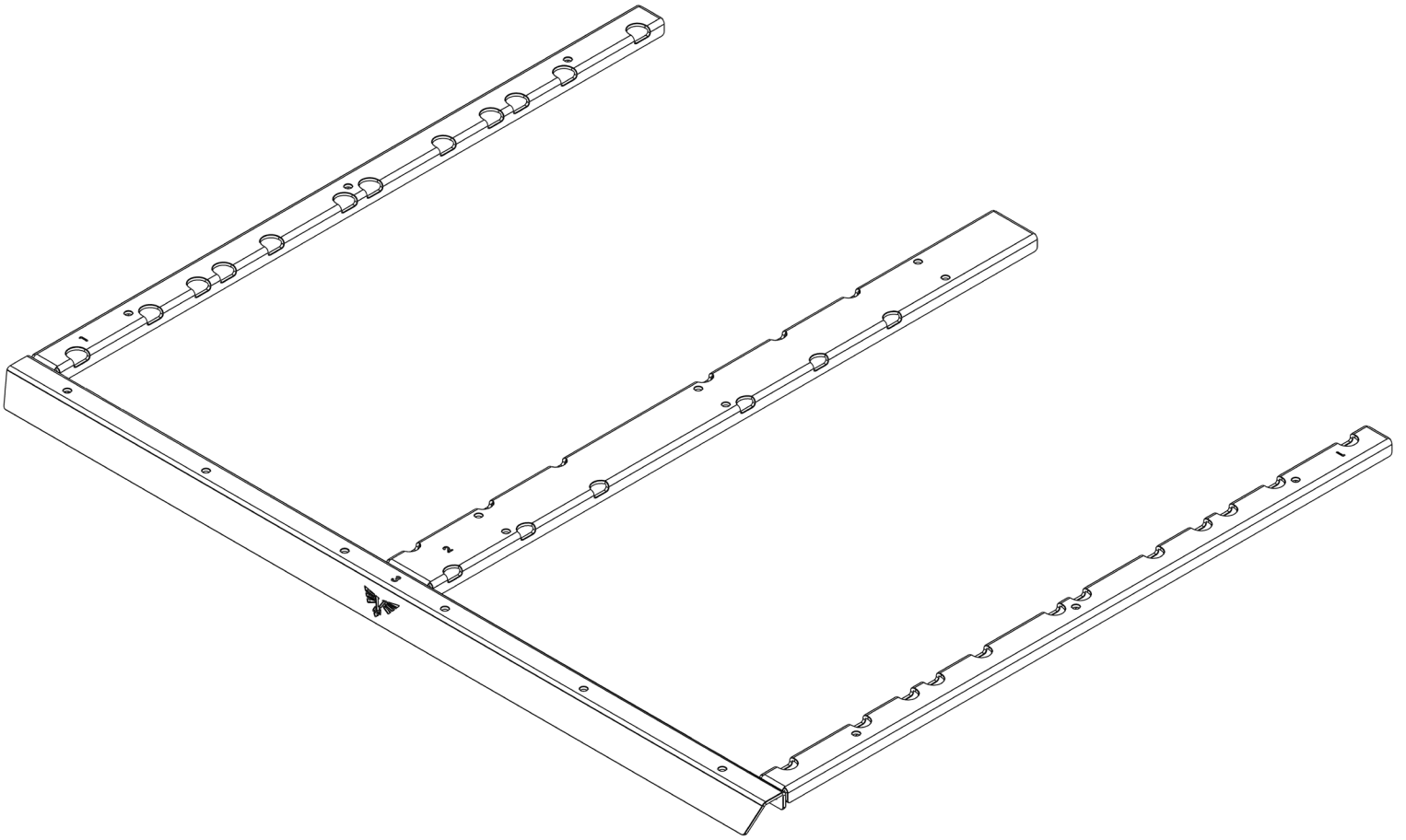


# INSTALLATION

2. Once the (2) side brackets are assembled and tight, you're going to install the provided middle bracket the same way using the provided 1/4" button heads, washers and flange nuts. Be sure to assemble in the correct orientation as shown below, with the end with the hole cut out closet to the front.

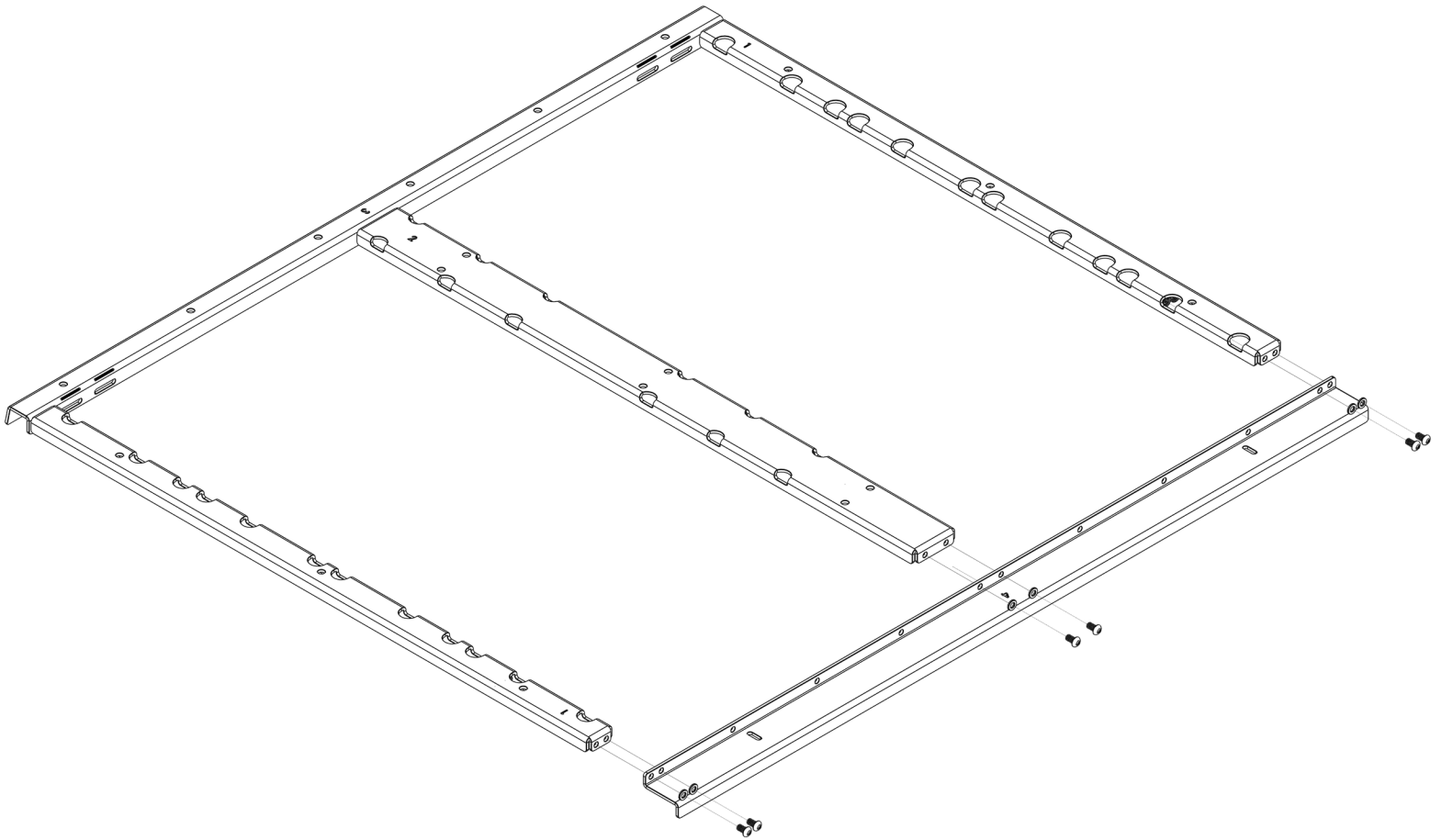


# INSTALLATION



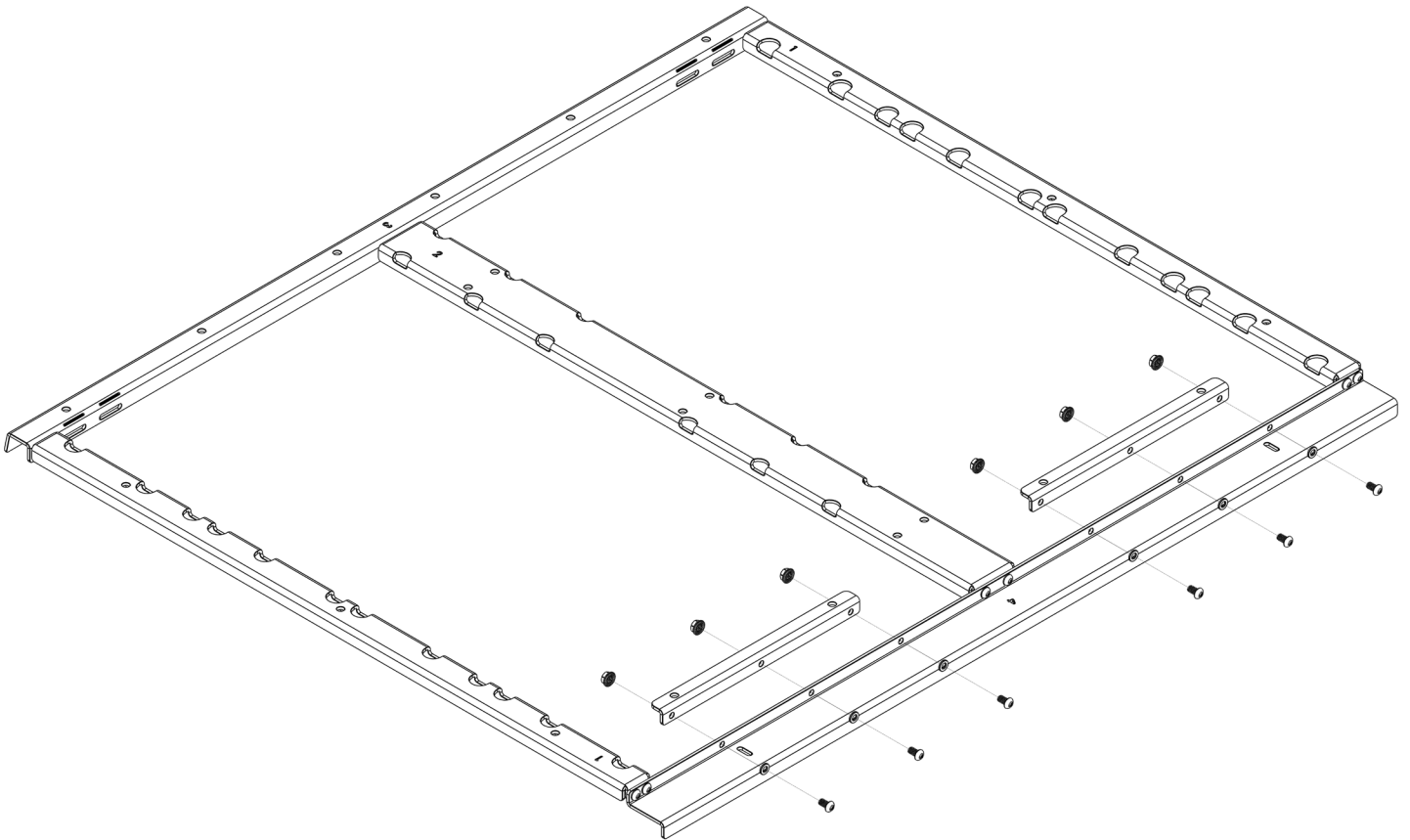
# INSTALLATION

3. With all (3) brackets now assembled and tight, you can install the provided back bracket using the 1/4" button heads, washers and flange nuts. Be sure to install in the orientation below with the back flange down.



# INSTALLATION

4. Now that the skeleton of the floor is assembled and tight, you now need to install the (2) provided support brackets with the 2 pems in them that the floor will bolt into. To do so, take the provided 1/4" button heads, washers and flange nuts and install them in the orientation shown below. Be sure to have the flanges with the pems in them facing up.





# INSTALLATION

5. With your floor assembled you can set the off to the side for now, you will now need to get in the back of your vehicle and locate the (4) tie down spots (2 in the front corners and 2 in the back) and use a pick tool or flat head screwdriver and pop the covers up off them. With the covers off you then need a 10mm socket to remove the factory bolts. Once the bolts are removed you should be able to remove the entire hook assembly. With all (4) hooks removed, you can now remove the front trim panel.



# INSTALLATION

6. You now need to remove the rear plastic trim section on the floor, to do so use a plastic pry tool or a flathead screw driver to get under the plastic to pop it up. Once the plastic is popped up enough to get your fingers under it, you need to pull straight up to free up all the clips before you can remove the piece as a whole. Once the piece is removed, pull up the passenger side corner using your pry tool, as shown below.



# INSTALLATION

7. With the corner peeled back, take a razor blade or box cutter and use it to cut and trim back the thin plastic flange under the edge where you removed the hook assembly from. With this done you are able to slide our bracket under the plastic to fasten to the bolt hole where the hook was secured. Once you have made that modification, you can fold and clip the corner back down to how it was, and also place and clip the rear plastic trim piece back down that was removed.



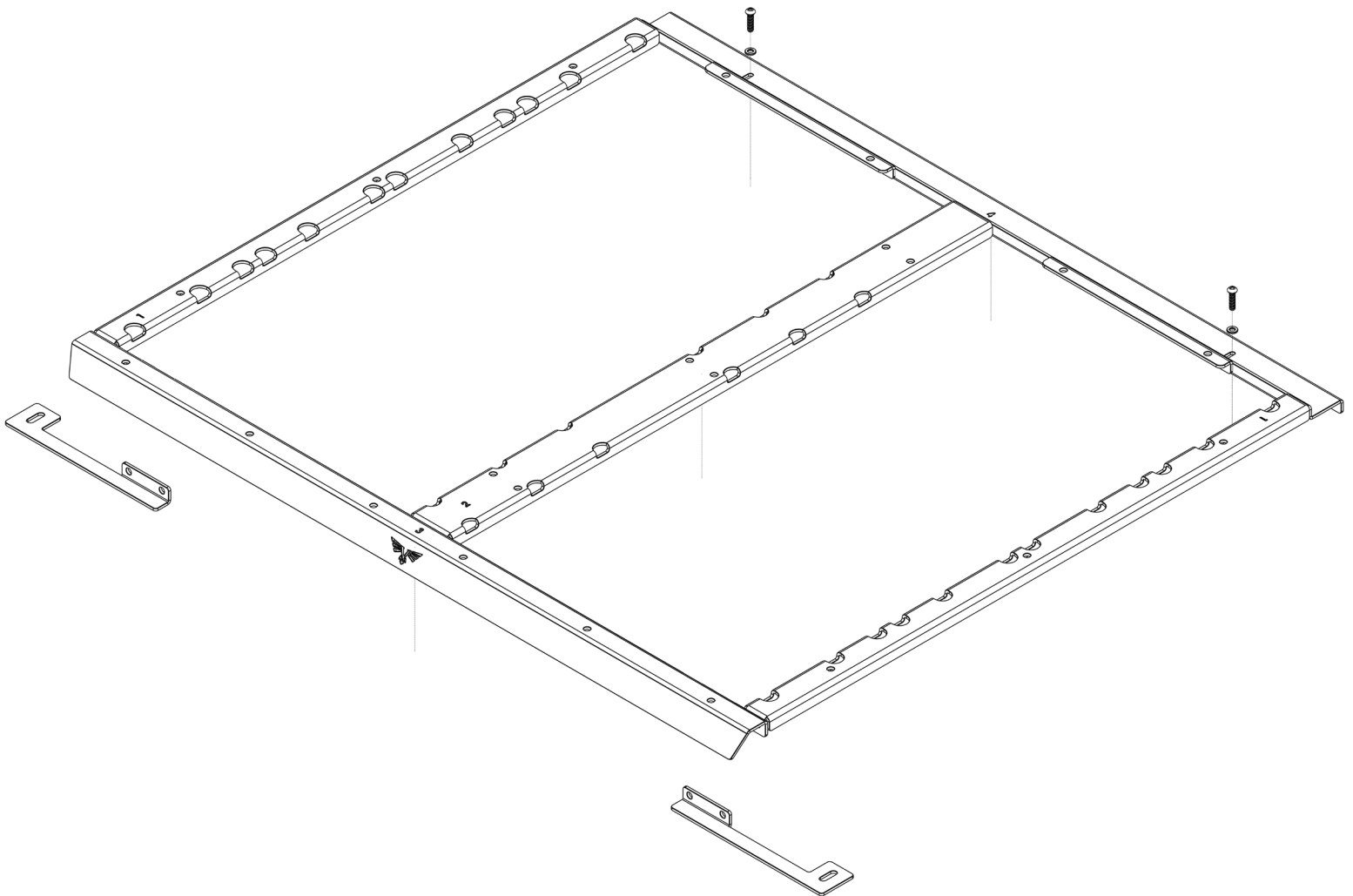
# INSTALLATION

8. Next you will be installing the (2) provided nut strip brackets that haven't been used yet. To do this, slide them under the plastic in the corners so that the holes in the brackets line up with the factory threaded holes where the hooks bolt into. Make sure the flange faces the front of the vehicle on each side, so that the pems can be threaded into from the back. With the brackets lined up and in place, take (2) of the provided M6 button heads with a washer and thread them in by hand for now to hold the brackets in place.



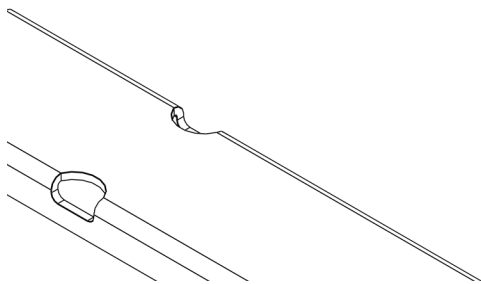
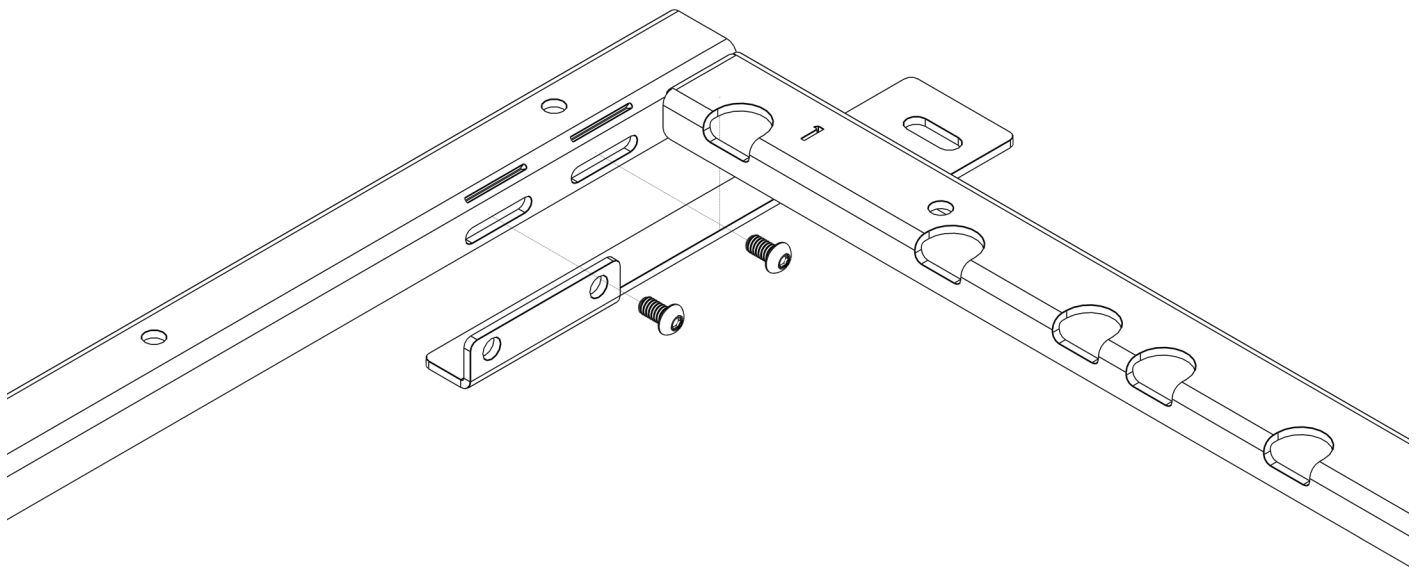
# INSTALLATION

9. With the brackets in place take your pre-assembled floor frame and slide it into the back of your vehicle, making sure the Victory logo cutout is facing the rear of the vehicle. The frame should drop into place and tuck in behind that factory plastic trim piece in the back of the cargo space. With the frame in place, take the factory hex bolts you removed for the hooks and hand thread them into the factory threaded locations in the back of the cargo space through the slots in frame, as shown below. Leave these hand tight for now.



# INSTALLATION

- 10.** Next you will need to install the nut strip brackets in the front of the cargo space to the frame. To do so, take (2) of the provided button heads and washers and thread them through the back of the slots in the frame to the pems in the brackets, as shown in the orientation below. Be sure to do this process on both sides.

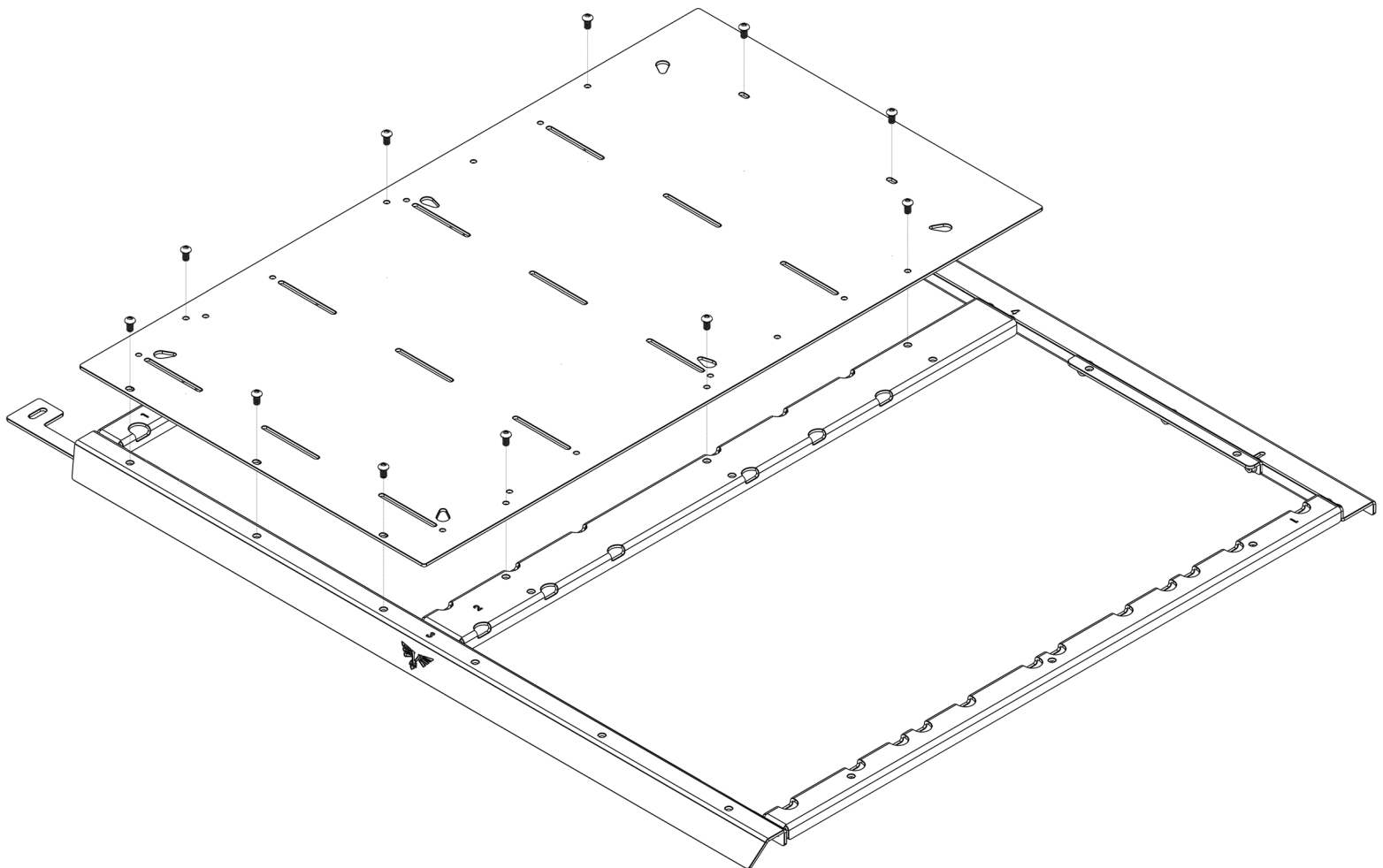


# INSTALLATION

- 11.** With the frame now secure to the floor, you can go back and remove the M6 bolts with a washer holding down those nut strip brackets in the factory hook location from step 8. You can now reinstall the factory tie down hooks in the back (2) locations over our nut strip brackets. We recommend adding a little bit of RTV into the threaded hole before tightening down the bolts. Be sure to do this process on both sides. You can now also at this point make sure your frame is parallel to the factory plastic, after it is use a 10mm socket to tighten the (2) factory hex bolts in the front of the frame. Using a 5/32" hex make sure the (4) bolts going into the nut strip are tight and secure also.

# INSTALLATION

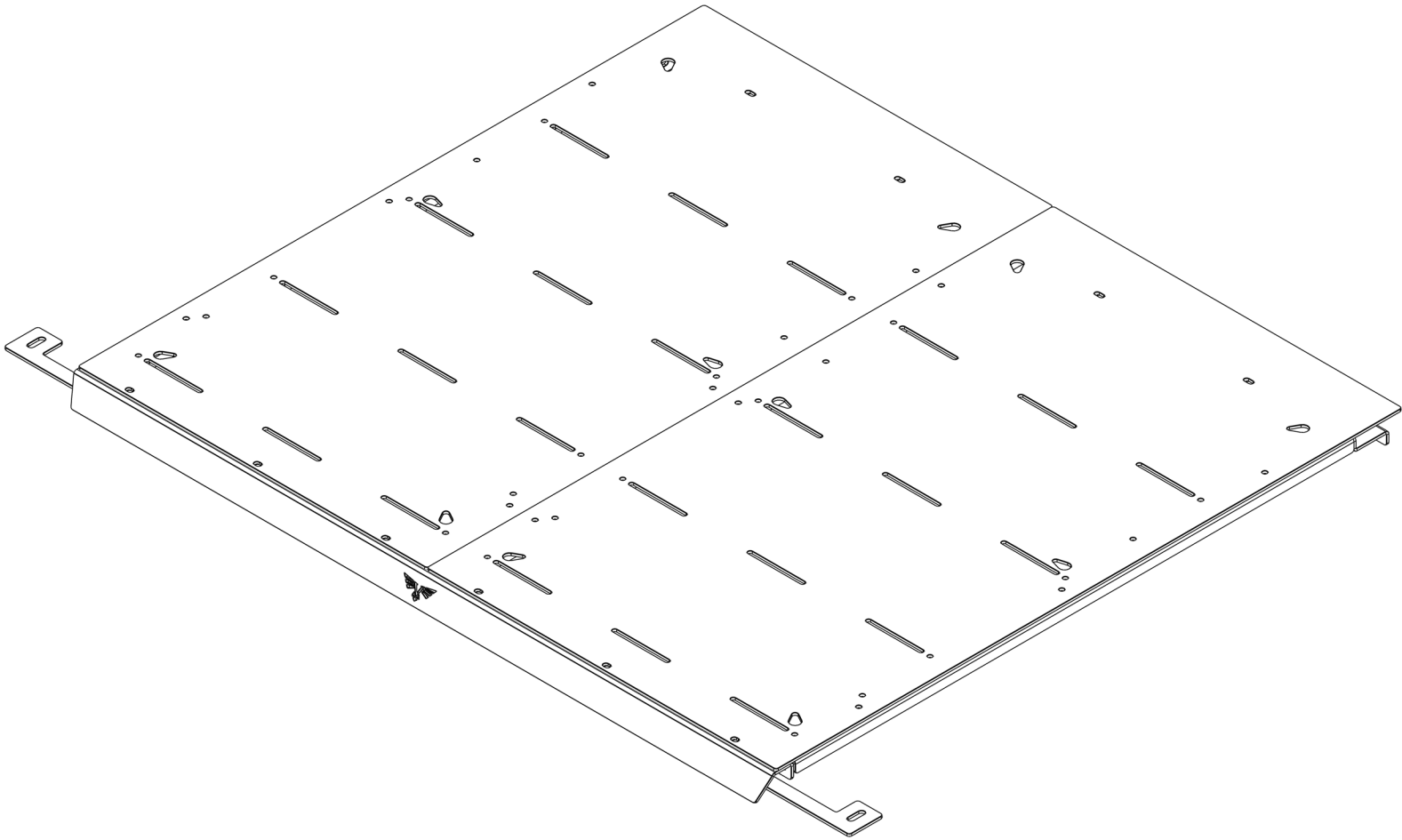
- 12.** Now that the frame is fully tight and secured to the floor, you can install the floor panels. Any accessories you plan on installing to the floor panels need to be bolted in place before assembling to the frame. You will be provided with bolt in nut tabs, and the orientation of these depend on the accessory that you're installing. For more details check out our product pages and install videos on fridge slides and drawer assemblies. But for this install we will be just showing you how to bolt the floor panels to the frame, to do so take (11) of the provided button heads and washers and install them into the pems through the panel, as shown in the orientation below. Be sure to do this on both sides.





# INSTALLATION

- 13.** Once both sides are tight, you are finished with your floor install. For placement and specific instruction of your new drawer or fridge slide, refer to your vehicle floor product page on our website for more details.



This installation guide shows how to assemble one floor system, but the possibilities are endless! Check out the product page for inspiration on how to maximize your space by using a combination of Off-Grid Drawers and our Off-Grid Fridge Slide!